



OFFICE / RETAIL SPACE FOR LEASE

410.770.9717
Fax 410.770.9718

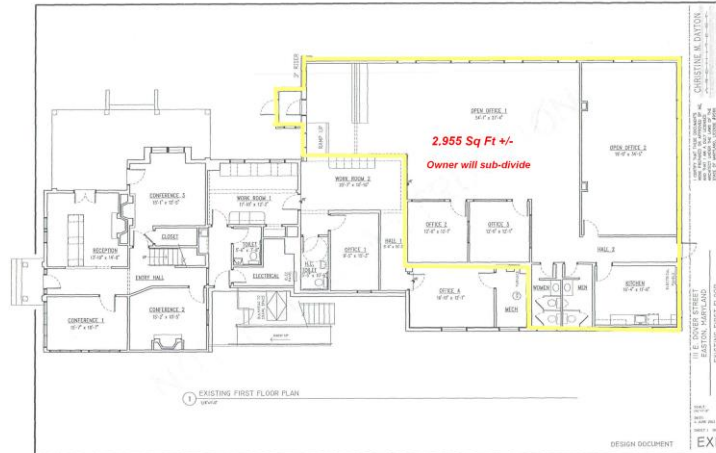
HEART OF EASTON BUSINESS DISTRICT 111 E. DOVER ST

P.O. Box 2131
Easton, Maryland 21601
www.OxfordCommercial.net

- Adjacent to the Tidewater Inn
- Across the street from US Post Office
- Fully Carpeted
- Kitchen / Break Room
- Training / Conference Room
- Private Front & Rear Entrances



- Zoned CR Central Business Commercial District
- Many Possible Uses
- Many Possible Configurations



OXFORD COMMERCIAL IS PROUD TO OFFER THIS HIGHLY DESIRABLE, ATTRACTIVE LOCATION FOR LEASE IN EASTON AT A COMPETITIVE PRICE

MULTI-YEAR LEASE UP TO 5 YEARS WITH RENEWAL OPTIONS

\$14 PER SQUARE FOOT – NNN

**FOR MORE INFORMATION CONTACT: C. PAUL COX AT
410-770-9717**

